

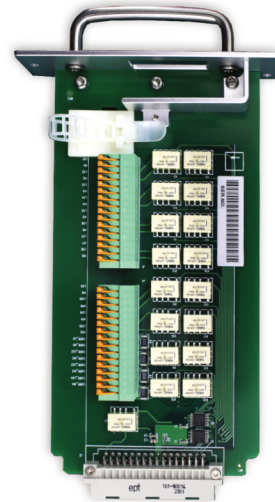
T3DAQ1-16

Data Acquisition System

Datasheet

Broad Measurement Range

DC: up to 1000 Volts
AC: up to 750 Volts
Current: up to 10A



Tools for Improved Debugging

- **16 Multi-purpose Data Acquisition Channels** built on a 6½ digit digital multimeter platform. ✓ **More flexible measurements without losing accuracy.**
- **Wide range of measurements** – DC/AC voltage and Current, Resistance, Capacitance, Frequency, Period, ✓ **More application coverage from a single system.**
- **True-RMS measurements** – All AC Voltage and Current ranges give True-RMS readings. ✓ **Excellent accuracy regardless of the waveform shape.**
- **Built-in cold terminal thermocouple compensation** ✓ **Accurate Temperature measurements.**
- **USB Device, USB Host and LAN support** ✓ **Remote control your measurements.**
- **3 Years Warranty as standard.** ✓ **Reliable product gives peace of mind.**

Key Specifications

Specification	Scanner	Front Panel Connector
Number of Channels	12 Multi-Purpose and 4 Current Channels	1 Multi-Purpose channel
DC/AC Voltage Range	200 mV to 200 V	200 mV to 1000 V
DC/AC Current Range	2A fixed	200 µA to 10 A
2/ 4 Wire Resistance Range	200 Ohms to 100 MOhms	

PRODUCT OVERVIEW

Teledyne Test Tools T3DAQ1-16 is a 16 channel Data Acquisition System incorporating the latest 4.3 inch (10.92cm) dual-display technology which can be configured to show Data Histograms, Data fluctuation Trends, Bar Graph, Statistics or the traditional Number mode, all in an easy to use interface. The T3DAQ features 12 multi-purpose + 4 current channels and supports various measurement functions. It provides a convenient and versatile solution for test applications that require multiple measurement points or signals and is an ideal tool for R&D burn-in and production testing.

A great feature of the Teledyne Test Tools T3DAQ is its ability to make highly accurate True RMS AC Voltage and Current measurements, meaning no loss of accuracy even when measuring complex voltage and current waveforms.

The T3DAQ provides various measurement modes to satisfy a wide range of application requirements. 12 Multi-purpose channels can be configured individually for various scan requirements. The Channel configuration function allows user to configure different parameters such as measurement type, range, scan mode, number of scan cycles, and duration of scan. Similarly, the scan control menu provides flexibility to schedule, start, and stop the scan. Scanning data can be viewed live during a scan and can also be saved for future use. An internal 1GB flash memory is available for data logging and to save configuration files. The T3DAQ also features a USB Host interface to use a USB flash drive to collect data without being connected to a PC.

The T3DAQ is equipped with LAN and USBTMC interfaces for remote control of the device. The device can be controlled remotely using EasyDMM software. The graphical interface of the software makes it easy to configure measurements, setup and execute scans or troubleshoot the design. Live measurement data can be viewed in numeric digits or graphically by trend chart, bar graph and histogram. The data can be manually or automatically exported as CSV files for further analysis.

PANEL INTRODUCTION



1. 4.3" Large TFT LCD Displays function menus and various other parameters.
2. USB Host interface for Data Storage
3. Power Button
4. Softkeys Provide More Intuitive And Fast Operation
5. Measurement and Assistant Function Keys
6. Signal input Terminals
7. 16-Channel Data Acquisition Module
8. External Trigger
9. VMC Output
10. LAN Port
11. USBTMC Port
12. Power Socket

FEATURES

Features

- 4.3" TFT-LCD Display
- Dual display, Chinese and English Menu
- Built-in front panel accessible help system
- File management (support for U-disc and local storage)
- Real 6-5 digit (2,200,000 count) readings resolution
- True-RMS AC Voltage and AC Current measuring
- 1 GB flash memory for mass storage configuration files and data files
- Built-in cold terminal compensation for thermocouple
- Standard interface: USB Device, USB Host, LAN
- USB & LAN remote interfaces support common SCPI command set.

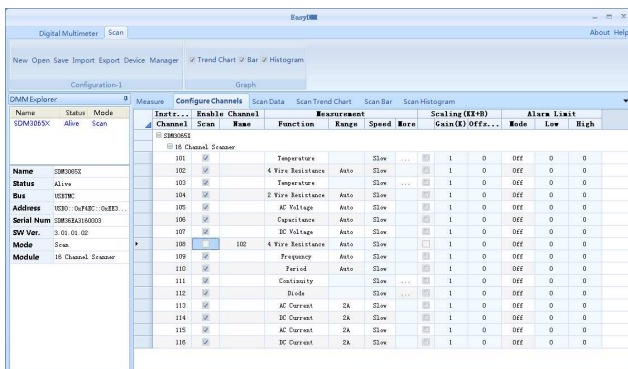
Application Fields

- Research Laboratory
- Development Laboratory
- Repair and Maintenance
- Calibration Laboratory
- Automatic Production Test
- General bench-top use

EASYDMM SOFTWARE

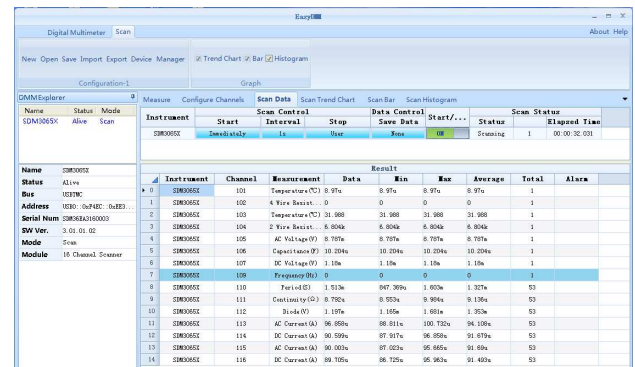
The T3DAQ can be remotely operated by the EasyDMM software. The software provides user friendly graphical interface to operate the DAQ.

Channel Configuration



Configure Channels menu in the Scan mode can be used to enable channels as well as to configure various settings such as measurement function, range, speed of measurement. Channels can also be monitored within the defined limits by using Alarm Limit feature.

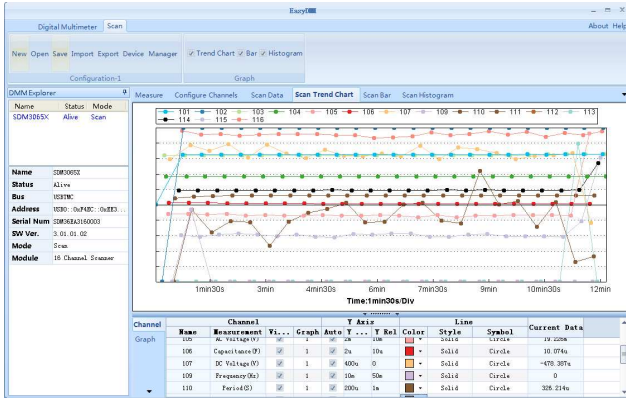
Data Acquisition



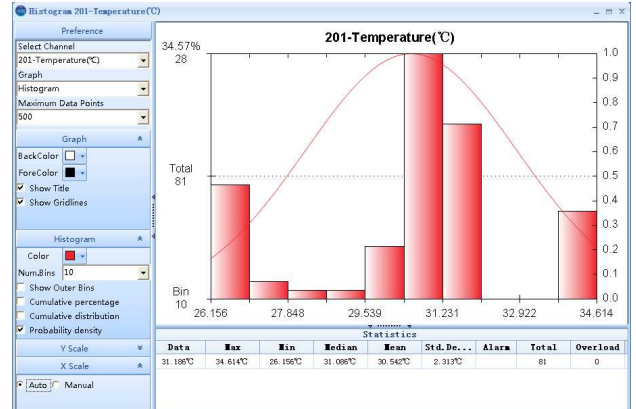
Different measurement settings such as Scan interval, Start and Stop time can be set from the Scan Data menu. The Result section provides the live measurement data along with min, max and average values. It also provides total number of scans and number of Alarm for every channel.

FEATURES

Trend Chart



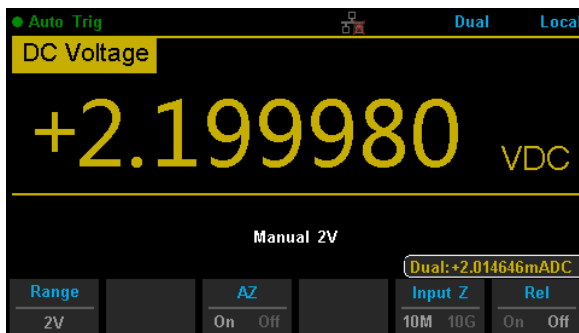
Histogram



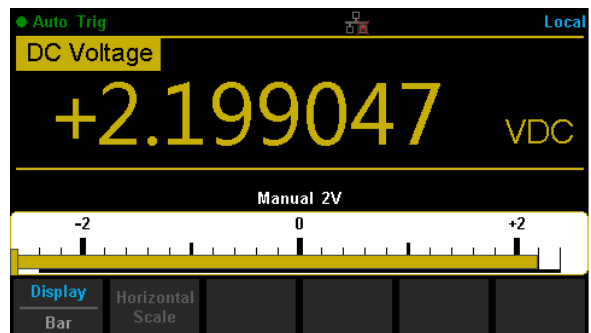
To view the scanned data visually, the software has Trend Chart, Histogram and Bar graph. All the graphs also has user customizable options such as colour, axis scales, type of curve etc.

The T3DAQ has a 6½ Digit DMM functionality built in. DMM functionality can be used using the front panel connector and is useful when making quick measurements. The DMM supports all the functions offered by the scanner with some additional ranges in Voltage and Current measurements.

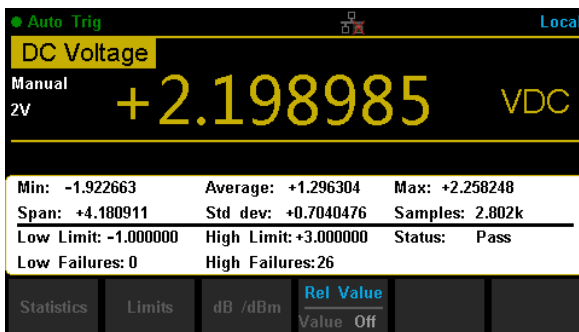
Dual Display



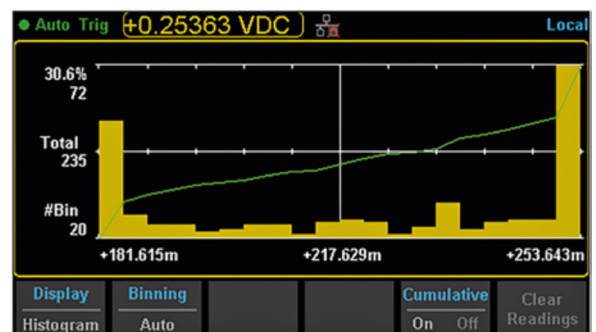
Bar Chart



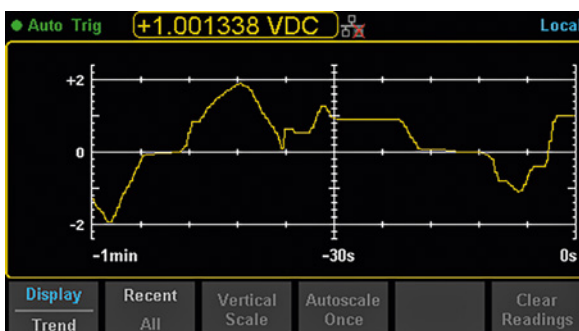
Statistics



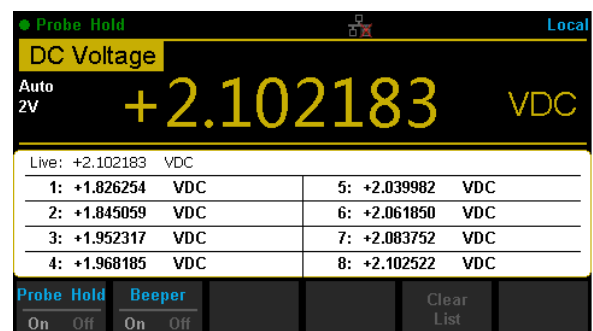
Histogram



Trend Chart



Hold Measurement



Scanner Specifications^[1]

Max AC Voltage	125 rms or 175 V peak, 100kHz, 0.3 A switched, 125VA (resistive load)
Contact Life	> 100000 operations, at 1 A 30VDC (at 0.5Hz) > 100000 operation, at 0.3 A 125VDC (at 0.5Hz)
Contact Resistance	75 mΩ (maximum at 6 VDC, 1A)
Channel to channel switching time	280ms (typical)
Maximum switching voltage	250 VAC, 220 VDC
Maximum switching power	62.5 VA / 30W
Insulation Resistance	Minimum 1 GΩ
Connect Type	Clamp terminal, # 24 AWG wire size

Remark: [1] Valid when the instrument is used in Scan Mode. For full specifications refer to the tabs below.

NOTE: Do not remove the scanner card while the measurements are in progress to avoid damage.

Channel Capabilities

Item	No. of wires	No. of channels
DCV , ACV ^[1]	2 wires (H , L)	12 (CH1 ~ CH12)
DCI , ACI ^[2]	2 wires (H , L)	4 (CH13 ~ CH16) (2A Range Only)
2W Resistance	2 wires (H , L)	12 (CH1 ~ CH12)
4W Resistance	4 wires (Input H , L + sense H, L)	6 pairs (CH1 [input] & CH7[sense], 2&8, ●●●, 6&12)
Capacitance	2 wires (H , L)	12 (CH1 ~ CH12)
Diode/Continuity	2 wires (H , L)	12 (CH1 ~ CH12)
Period/Frequency	2 wires (H , L)	12 (CH1 ~ CH12)
Temp(Thermocouple)	2 wires (H , L)	12 (CH1 ~ CH12)
Temp (RTD)	2 wires (H , L)	12 (CH1 ~ CH12)

Remarks:

[1] Voltage range: < 2.2VAC, 110VDC

[2] For continuous current < 2.2A, Accuracy ± (% 3 (reading) + 0.02% (range)).

DC Characteristics

Accuracy ± (% of reading + % of range) ^[1]

Function	Range ^[2]	Test Current Or Burden Voltage	24Hour ^[3] TCAL °C ±1 °C	90day TCAL °C ±5 °C	1Year TCAL °C ±5 °C	Temperature coefficient 0 °C to (TCAL °C -5 °C) (TCAL °C +5 °C) to 50 °C
DC Voltage	200.0000 mV		0.0020+ 0.0015	0.0030 + 0.0020	0.0040 + 0.0023	0.0005 + 0.0003
	2.000000 V		0.0015 + 0.0004	0.0020 + 0.0004	0.0035 + 0.0006	0.0005 + 0.0001
	20.00000 V		0.0020 + 0.0003	0.0030 + 0.0004	0.0040 + 0.0004	0.0005 + 0.0001
	200.0000 V		0.0020 + 0.0005	0.0040 + 0.0004	0.0050 + 0.0005	0.0005 + 0.0001
	1000.000 V ^{[4][8]}		0.0020 + 0.0005	0.0040 + 0.0008	0.0055 + 0.0008	0.0005 + 0.0001
DC Current ^[9]	200.0000 µA	< 0.03V	0.009 + 0.010	0.040 + 0.005	0.050 + 0.005	0.0020 + 0.0026
	2.000000 mA	< 0.25V	0.007 + 0.001	0.030 + 0.001	0.050 + 0.002	0.0020 + 0.0001
	20.00000 mA	< 0.07 V	0.006 + 0.008	0.030 + 0.005	0.050 + 0.005	0.0020 + 0.0015
	200.0000 mA	< 0.7V	0.009 + 0.001	0.030 + 0.001	0.050 + 0.002	0.0020 + 0.0001
	2.000000 A	< 0.12 V	0.045 + 0.015	0.080 + 0.005	0.100 + 0.012	0.0050 + 0.0008
	10.00000 A ^[5]	< 0.6 V	0.090 + 0.002	0.120 + 0.005	0.150 + 0.005	0.0050 + 0.0018
Resistance ^[6]	200.0000 Ω	1 mA	0.0030 + 0.0031	0.008 + 0.005	0.010 + 0.004	0.0006 + 0.0006
	2.000000 KΩ	1 mA	0.0020 + 0.0005	0.008 + 0.001	0.010 + 0.001	0.0006 + 0.0001
	20.00000 KΩ	100 µA	0.0020 + 0.0005	0.008 + 0.001	0.010 + 0.001	0.0006 + 0.0001
	200.0000 KΩ	10 µA	0.0020 + 0.0005	0.008 + 0.001	0.010 + 0.001	0.0006 + 0.0001
	1.000000 MΩ ^[8]	2 µA	0.0020+ 0.0010	0.010 + 0.001	0.012 + 0.001	0.0010 + 0.0002
	10.00000 MΩ	200 nA	0.015 + 0.001	0.030 + 0.001	0.040 + 0.001	0.0030 + 0.0005
	100.0000 MΩ	200 nA 10 MΩ	0.300 + 0.010	0.800 + 0.010	0.800 + 0.010	0.1500 + 0.0002
Diode Test ^[7]	0~ 2V	1 mA	0.002 + 0.009	0.008 + 0.020	0.010 + 0.020	0.0010 + 0.0020
	2~ 4V	1 mA	0.002 + 0.010	0.008 + 0.020	0.010 + 0.020	0.0010 + 0.0020
Continuity Test	2000.0 Ω	1 mA	0.002 + 0.010	0.008 + 0.020	0.010 + 0.020	0.0010 + 0.0020

Remarks:

[1] Specifications are for 90-minute warm-up and 100NPLC integration time. For integration time <100NPLC, add the appropriate "RMS Noise Adder" listed in the following table.

[2] 10% over range on all ranges except DCV 1000V and DCI 10A range.

[3] Relative to calibration standards.

[4] For each additional volt over ± 500 V, add 0.03mV error.

[5] For continuous current > 7A DC or 7A AC RMS, 30 seconds ON and 30 seconds OFF.

[6] Specifications are for 4-wire resistance measurement or 2-wire resistance measurement using REL operation. Without REL operation, add 0.2 Ω additional error in 2-wire resistance measurement.

[7] Accuracy specifications for the voltage measured at the input terminal only. 1 mA test current is typical. Variation in the current source will create some variation in the voltage drop across a diode junction. Adjustable voltage range : 0~ 4V.

[8] This range is only available when the the front panel connectors are used and not when the instrument is in Scan mode.

[9] Only 2A fixed range is available when the instrument is used in Scan mode.

Performance Versus Integration Time – 50 Hz (60 Hz) Power-line Frequency^[1]

Integration Time	Resolution ^[2] (ppm Range)	NMRR ^[3] (dB)	Readings/s ^[4]		RMS Noise Adder ^[5] (% of Range)			
			50Hz	60Hz	DCV 20V	DCV 2V 200V Resistance 2K Ω 20K Ω	DCV 1000V DCI 2 mA 200mA	DCV 200mV Resistance 200 Ω DCI 10A
0.005(0.006)	2.7	0	10000	10000	0.0006	0.0008	0.0015	0.0040
0.05 (0.06)	1.6	0	1000	1000	0.0004	0.0005	0.0008	0.0025
0.5 (0.6)	1	0	100	100	0.0003	0.0003	0.0006	0.0025
1	0.22	60	50	60	0	0.0001	0.0002	0.0005
10	0.08	60	5	6	0	0	0	0.0002
100	0.035	60	0.5	0.6	0	0	0	0

Remarks:

[1] Only 1 NPLC and 10 NPLC ranges are available as Fast and Slow modes respectively when the instrument is used in Scan mode.

[2] Typical value. Resolution is defined as the typical 20V range RMS noise.

[3] Normal mode rejection ratio for power-line frequency $\pm 0.1\%$. For power-line frequency $\pm 1\%$, subtract 20 dB. For $\pm 3\%$, subtract 30dB.

[4] Maximum rate for DCV, DCI, 2-wire resistance and 4-wire resistance functions.

[5] The basic DC accuracy specifications include RMS noise at 100 NPLC. For <100 NPLC, add "RMS Noise Adder" to the basic DC accuracy specifications.

[6] When Power Supply of frequency is 60Hz, the cycles is 0.006, 0.06, 0.6,1,10,100 NPLC.

SFDR & SINAD^[1]

Function	Range	Spurious-Free Dynamic Range (SFDR)	Signal-to-Noise-and-Distortion (SINAD)
DCV	200mV	80	75
	2V	76	80
	20V	78	72
	200V	80	78
	1000V	82	80
DCI	200uA	90	70
	2mA	90	80
	20mA	85	70
	200mA	80	75
	2A	70	60

[1] Typical value. -1dBFS, 1k Hz single tone. 100 us aperture time and auto zero off.

AC Characteristics

Accuracy \pm (% of reading + % of range)^[1]

Function	Range ^[2]	Frequency Range	24 Hour ^[3] TCAL °C $\pm 1^\circ\text{C}$	90 Day TCAL °C $\pm 5^\circ\text{C}$	1 Year TCAL °C $\pm 5^\circ\text{C}$	Temperature coefficient 0°C to (TCAL °C -5°C) (TCAL °C +5°C) to 50°C
True-RMS AC Voltage ^[4]	200.0000mV	3Hz- 5Hz	1.00 + 0.03	1.00 + 0.04	1.00 + 0.04	0.100 + 0.004
		5Hz-10Hz	0.35 + 0.03	0.35 + 0.04	0.35 + 0.04	0.035 + 0.005
		10Hz-20kHz	0.04 + 0.03	0.05 + 0.04	0.06 + 0.04	0.005 + 0.004
		20kHz-50kHz	0.10 + 0.05	0.11 + 0.05	0.12 + 0.05	0.011 + 0.005
		50kHz-100kHz	0.55 + 0.08	0.60 + 0.08	0.60 + 0.08	0.060 + 0.008
		100kHz- 300kHz	4.00 + 0.50	4.00 + 0.50	4.00 + 0.50	0.20 + 0.02
	2.000000 V	3Hz- 5Hz	1.00 + 0.02	1.00 + 0.03	1.00 + 0.03	0.100 + 0.003
		5Hz-10Hz	0.35 + 0.02	0.35 + 0.03	0.35 + 0.03	0.035 + 0.003
		10Hz-20kHz	0.04 + 0.02	0.05 + 0.03	0.06 + 0.03	0.005 + 0.003
		20kHz-50kHz	0.10 + 0.04	0.11 + 0.05	0.12 + 0.05	0.011 + 0.005
		50kHz-100kHz	0.55 + 0.08	0.60 + 0.08	0.60 + 0.08	0.060 + 0.008
		100kHz- 300kHz	4.00 + 0.50	4.00 + 0.50	4.00 + 0.50	0.20 + 0.02
	20.00000 V	3Hz- 5Hz	1.00 + 0.03	1.00 + 0.04	1.00 + 0.04	0.100 + 0.004
		5Hz-10Hz	0.35 + 0.03	0.35 + 0.04	0.35 + 0.04	0.035 + 0.004
		10Hz-20kHz	0.04 + 0.04	0.07 + 0.04	0.08 + 0.04	0.008 + 0.004
		20kHz-50kHz	0.10 + 0.05	0.12+ 0.05	0.15 + 0.05	0.012 + 0.005
		50kHz-100kHz	0.55 + 0.08	0.60 + 0.08	0.60 + 0.08	0.060 + 0.008
		100kHz- 300kHz	4.00 + 0.50	4.00 + 0.50	4.00 + 0.50	0.20 + 0.02
	200.0000 V	3Hz- 5Hz	1.00 + 0.02	1.00 + 0.03	1.00 + 0.03	0.100 + 0.003
		5Hz-10Hz	0.35 + 0.02	0.35 + 0.03	0.35 + 0.03	0.035 + 0.003
		10Hz-20kHz	0.04 + 0.02	0.07 + 0.03	0.08 + 0.03	0.008 + 0.003
		20kHz-50kHz	0.10 + 0.04	0.12+ 0.05	0.15 + 0.05	0.012 + 0.005
		50kHz-100kHz	0.55 + 0.08	0.60 + 0.08	0.60 + 0.08	0.060 + 0.008
		100kHz- 300kHz	4.00 + 0.50	4.00 + 0.50	4.00 + 0.50	0.20 + 0.02
750.0000V ^{[5][9]}	3Hz- 5Hz	1.00 + 0.02	1.00 + 0.03	1.00 + 0.03	0.100 + 0.003	
	5Hz-10Hz	0.35 + 0.02	0.35 + 0.03	0.35 + 0.03	0.035 + 0.003	
	10Hz-20kHz	0.04 + 0.02	0.07 + 0.03	0.08 + 0.03	0.008 + 0.003	
	20kHz-50kHz	0.10 + 0.04	0.12+ 0.05	0.15 + 0.05	0.012 + 0.005	
	50kHz-100kHz	0.55 + 0.08	0.60 + 0.08	0.60 + 0.08	0.060 + 0.008	
	100kHz- 300kHz	4.00 + 0.50	4.00 + 0.50	4.00 + 0.50	0.20 + 0.02	

Remarks:

[1] Specifications are for 90-minute warm-up, > 3Hz ac filter and sine wave input.

[2] 10% over range on all ranges except ACV 750 V and ACI 10 A ranges.

[3] Relative to calibration standards.

[4] Specifications are for sine wave input >5% of range. For inputs within 1% and 5% of range and <50 kHz, add 0.1% of range additional error. For 50 kHz to 100k Hz, add 0.13% of range additional error.

[5] ACV 750 range limited to 8×10^7 Volt-Hz. For input over 300V rms, add 0.7mV error for each additional volt.

[6] For continuous current > DC 7A or AC RMS 7A, 30 seconds ON and 30 seconds OFF.

[7] For frequency below 100 Hz, the specification of slow filter is only for sine wave input.

[8] Specifications are for sine wave input >5% of range. For inputs within 1% to 5% of range, add 0.1% of range additional error. Specifications

are typical values for 200uA and 2mA, 2A and 10A ranges when frequency >1k Hz.

[9] This range is only available when the front panel connectors are used and not when the instrument is in Scan mode.

[10] Only 2A fixed range is available when the instrument is used in Scan mode.

Function	Range ^[2]	Frequency Range	24 Hour T C A L ^[3] ±1°C	90 Day T C A L ^[3] ±5°C	1Year T C A L ^[3] ±5°C	Temperature coefficient 0°C to (TCAL°C -5°C)) TCAL°C +5°C) to 50°C
True-RMS AC Current ^{[8][10]}	200.0000 uA	3Hz- 5Hz	1.10 + 0.06	1.10 + 0.06	1.10 + 0.06	0.200 + 0.005
		5Hz-10Hz	0.35 + 0.06	0.35 + 0.06	0.35 + 0.06	0.100 + 0.005
		10Hz-5kHz	0.15 + 0.06	0.15 + 0.06	0.15 + 0.06	0.015 + 0.005
		5kHz-10kHz	0.35 + 0.70	0.35 + 0.70	0.35 + 0.70	0.030 + 0.005
	2.000000mA	3Hz- 5Hz	1.00 + 0.04	1.00 + 0.04	1.00 + 0.04	0.100 + 0.005
		5Hz-10Hz	0.30 + 0.04	0.30 + 0.04	0.30 + 0.04	0.035 + 0.005
		10Hz-5kHz	0.12 + 0.04	0.12 + 0.04	0.12 + 0.04	0.015 + 0.005
		5kHz-10kHz	0.20 + 0.25	0.20 + 0.25	0.20 + 0.25	0.030 + 0.005
	20.00000mA	3Hz- 5Hz	1.10 + 0.06	1.10 + 0.06	1.10 + 0.06	0.200 + 0.005
		5Hz-10Hz	0.35 + 0.06	0.35 + 0.06	0.35 + 0.06	0.100 + 0.005
		10Hz-5kHz	0.15 + 0.06	0.15 + 0.06	0.15 + 0.06	0.015 + 0.005
		5kHz-10kHz	0.35 + 0.70	0.35 + 0.70	0.35 + 0.70	0.030 + 0.005
	200.0000mA	3Hz- 5Hz	1.00 + 0.04	1.00 + 0.04	1.00 + 0.04	0.100 + 0.006
		5Hz-10Hz	0.30 + 0.04	0.30 + 0.04	0.30 + 0.04	0.035 + 0.006
		10Hz-5kHz	0.10 + 0.04	0.10 + 0.04	0.10 + 0.04	0.015 + 0.006
		5kHz-10kHz	0.20 + 0.25	0.20 + 0.25	0.20 + 0.25	0.030 + 0.006
	2.000000 A	3Hz- 5Hz	1.10 + 0.06	1.10 + 0.06	1.10 + 0.06	0.100 + 0.006
		5Hz-10Hz	0.35 + 0.06	0.35 + 0.06	0.35 + 0.06	0.035 + 0.006
		10Hz-5kHz	0.15 + 0.06	0.15 + 0.06	0.15 + 0.06	0.015 + 0.006
		5kHz-10kHz	0.35 + 0.70	0.35 + 0.70	0.35 + 0.70	0.030 + 0.006
	10.00000A ^[6]	3Hz- 5Hz	1.10 + 0.08	1.10 + 0.10	1.10 + 0.10	0.100 + 0.008
		5Hz-10Hz	0.35 + 0.08	0.35 + 0.10	0.35 + 0.10	0.035 + 0.008
		10Hz-5kHz	0.15 + 0.08	0.15 + 0.10	0.15 + 0.10	0.015 + 0.008

Additional Low Frequency Errors (% of reading)				Additional Crest Factor Errors (non-sine wave) ^[7]	
Frequency	AC Filter			Crest Factor	error(% of reading)
	> 3Hz	> 20 Hz	> 200Hz		
10Hz-20Hz	0	0.74	--	1 - 2	0.05
20Hz-40Hz	0	0.22	--	2 - 3	0.2
40Hz-100Hz	0	0.06	0.73	3 - 4	0.4
100Hz- 200Hz	0	0.01	0.22	4 - 5	0.5
200Hz-1kHz	0	0	0.18		
> 1kHz	0	0	0		

Remarks:

[1] Specifications are for 90-minute warm-up, > 3Hz ac filter and sine wave input.

[2] 10% over range on all ranges except ACV 750 V and ACI 10 A ranges.

[3] Relative to calibration standards.

[4] Specifications are for sine wave input >5% of range. For inputs within 1% and 5% of range and <50 kHz, add 0.1% of range additional error. For 50 kHz to 100k Hz, add 0.13% of range additional error.

[5] ACV 750 range limited to 8x10⁷ Volt-Hz. For input over 300V rms, add 0.7mV error for each additional volt.

[6] For continuous current > DC 7A or AC RMS 7A, 30 seconds ON and 30 seconds OFF.

[7] For frequency below 100 Hz, the specification of slow filter is only for sine wave input.

[8] Specifications are for sine wave input >5% of range. For inputs within 1% to 5% of range, add 0.1% of range additional error. Specifications are typical values for 200uA and 2mA, 2A and 10A ranges when frequency >1k Hz.

[9] This range is only available when the front panel connectors are used and not when the instrument is in Scan mode.

[10] Only 2A fixed range is available when the instrument is used in Scan mode.

Frequency and Period Characteristics

Accuracy± (% of Reading)^{[1][2]}

Function	Range	Frequency Range	24 Hour ^[3] TCAL °C ±1 °C	90 Day TCAL °C ±5 °C	1 Year TCAL °C ±5 °C	Temperature coefficient 0 °C to (TCAL °C -5 °C) (TCAL °C +5 °C) to 50 °C
Frequency, Period	200 mV to 750 V	3 Hz – 5Hz	0.07	0.07	0.07	0.005
		5 Hz – 10 Hz	0.04	0.04	0.04	0.005
		10 Hz – 40 Hz	0.02	0.02	0.02	0.001
		40 Hz – 300 KHz	0.005	0.006	0.007	0.001
		300 KHz – 1 MHz	0.005	0.006	0.007	0.001

Frequency	Gate Time (Resolution)			
	1s (0.1ppm)	0.1 s (1ppm)	0.01 s (10ppm)	0.001 s (100ppm)
3 Hz– 5Hz	0	0.12	0.12	0.12
5 Hz– 10 Hz	0	0.17	0.17	0.17
10 Hz–40 Hz	0	0.20	0.20	0.20
40 Hz–100 Hz	0	0.06	0.21	0.21
100 Hz–300 Hz	0	0.03	0.21	0.21
300Hz–1 KHz	0	0.01	0.07	0.07
> 1 K Hz	0	0	0.02	0.02

Remarks:

[1] Specifications are for 90 minutes warm-up, using 1s gate time.

[2] For frequency ≤ 300 kHz, the specification is the 10% to 110% of range of the AC input voltage. For frequency > 300 kHz, the specification is the 20% to 110% of range of the AC input voltage. The maximum input is limited to 750V rms or 8 × 10⁷ Volts-Hz (whichever is less). The 200 mV range is full range input or input that is larger than the full range. For 20mV to 200mV, multiply % of reading error ×10.

[3] Relative to calibration standards.

Capacitance Characteristic

Accuracy± (% of Reading + % of Range)^[1]

Function	Range ^[2]	Test Current	1 Year TCAL °C ±5 °C	Temperature coefficient 0 °C to (TCAL °C - 5 °C) (TCAL °C + 5 °C) to 50 °C
Capacitance	2.0000 nF	10 µA	2 + 2.4	0.05 + 0.06
	20.000 nF	10 µA	1 + 0.1	0.05 + 0.01
	200.00 nF	100µA	1 + 0.1	0.01 + 0.01
	2.0000µF	100µA	1 + 0.1	0.01 + 0.01
	20.000µF	1 mA	1 + 0.1	0.01 + 0.01
	200.00µF	1 mA	1 + 0.1	0.01 + 0.01
	2.0000 mF ^[3]	1 mA	1 + 0.1	0.01 + 0.01
	20.000 mF ^[3]	1 mA	1 + 0.1	0.01 + 0.01
	100.00 mF ^[3]	1 mA	3 + 0.1	0.05 + 0.02

Remarks:

[1] Specifications are for 90 minutes warm-up and using REL operation. Additional errors may be caused by non-film capacitors.

[2] Specifications are the 1% to 110% of range on 2nF range and 10% to 110% of range on all other ranges

[3] This range is only available when the front panel connectors are used and not when the instrument is in Scan mode

Temperature Characteristics

Accuracy± (% of Reading)^[1]

Function	Probe Type	Type	Optimum Range	1 Year TCAL °C ±5°C	Temperature coefficient 0°C to (TCAL °C - 5°C) (TCAL °C + 5°C) to 50°C
Temperature	RTD ^[2] (R0 is 49Ω to 2.1kΩ)	α=0.00385	-200°C ~ 660°C	0.16°C	0.01°C
	Thermocouple ^[3]	B	0°C ~ 1820°C	0.76 °C	0.14°C
		E	-270°C ~ 1000°C	0.5°C	0.02°C
		J	-210°C ~ 1200°C	0.5°C	0.02°C
		K	-270°C ~ 1370°C	0.5°C	0.03°C
		N	-270°C ~ 1300°C	0.5°C	0.04°C
		R	-270°C ~ 1760°C	0.5°C	0.09°C
		S	-270°C ~ 1760°C	0.6°C	0.11°C
T	-270°C ~ 400°C	0.5°C	0.03°C		

Remarks:

[1] Specifications are for 90 minutes warm-up. Exclusive of sensor error.

[2] Specification is for 4WR sensor measurement or 2WR measurement using REL operation.

[3] Relative to cold junction temperature, accuracy is based on ITS-90. Built-in cold junction temperature refers to the temperature inside the banana jack and its accuracy is ± 2.5 °C .

Measurement Rate^[1]

Measurement rate^[4]

Function	Setting	Integration	Readings/s 50Hz (60Hz)
DC Voltage DC Current 2 - wire Resistance 4 - wire Resistance	0.005 (0.006) NPLC	100(100)us	10000 (10000)
	0.05 (0.06) NPLC	1 (1)ms	1000 (1000)
	0.5 (0.5) NPLC	4 (4)ms	100 (100)
	1 NPLC	20(16.7)ms	50 (60)
	10 NPLC	200(167)ms	5 (6)
	100 NPLC	2(1.67)s	0.5 (0.6)
AC Voltage AC Current	3Hz AC Filter		0.5
	20Hz		2
	200Hz		50
Frequency and Period ^[2]	1s Gate time		1
	0.1s		10
	0.01s		100
	0.001s		500
Capacitance ^[3]	100mF Range		0.5

Remarks:

[1] Only 1 NPLC (Fast mode) and 10 NPLC (slow mode) settings are available when the instrument is in Scan mode. All other settings are only available for the front panel connectors.

[2] 20 V range, 1k Hz input.

[3] The measurement period changes with the capacitance under test.

[4] Auto zero off , auto range off.

Measuring Method and other Characteristics

DC Voltage

Input Resistance	200 mV, 2 V, 20 V ranges: Selectable 10 M Ω or > 10 G Ω (For these ranges, input beyond $\pm 26V$ are clamped through 106 k Ω (typical)
	200 V and 1000 V ranges; 10 M Ω \pm 1%
Input Offset Current	50 pA, 25°C ,typical
Input Protection	1000 V
CMRR (common mode rejection ratio)	140 dB for 1 k Ω unbalance in LO lead, \pm 500 VDC peak maximum

Resistance

Measurement Method	Selectable 4-wire or 2-wire resistance Current source referenced to LO input
Open-circuit Voltage	Limited to <10V
Max. Lead Resistance (4-wire)	10% of range per lead for 200 Ω , 2 k Ω ranges, 1 k Ω per lead on all other ranges
Offset Compensation	Available on 200 Ω , 2k Ω and 20 k Ω ranges
Input Protection	1000 V on all ranges

DC Current

Shunt Resistor	100 Ω for 200 μ A, 2 m A 1 Ω for 20 m A , 200 m A 0.01 Ω for 2 A, 10 A
Input Protection	Rear panel : accessible 10 A,250 V Time-Lag fuse Internal 12A, 250V Time-Lag fuse

Continuity / Diode Test

Measurement Method	1 m A \pm 5% constant-current source or open-circuit voltage
Response Time	300 samples/sec, with audible tone
Beeper	Yes
Diode Threshold	Adjustable from 0 to 4 V
Continuity Threshold	Adjustable from 1 Ω to 2 K Ω
Input Protection	1000 V

Settling Time Considerations

Reading settling times are affected by source impedance, cable dielectric characteristics and input signal changes. The default measurement delay is selected to the correct reading for most measurements.

Measurement Considerations

Teflon or other high-impedance, low-dielectric absorption wire insulation is recommended for these measurements

True RMS AC Voltage

Measurement Method	AC-coupled True-RMS measurement with up to 400 V DC of bias at on any range.
Crest Factor	\leq 5 at full range
Input Impedance	1M Ω \pm 2% in parallel with <150pF capacitance on any range
Input Protection	750V rms on all ranges
AC Filter Bandwidth	Slow : 3 Hz \sim 300 KHz Medium : 20 Hz \sim 300 KHz Fast : 200 Hz \sim 300 KHz
CMRR (common mode rejection ratio)	70 dB, for the 1 k Ω unbalance in LO lead, < 60 Hz, \pm 500 VDC peak maximum

True RMS AC Current	
Measurement Method	Direct coupled to the fuse and shunt; AC-coupled True RMS measurement (Measure the AC component only).
Crest Factor	≤ 3 at full range
Max. Input	DC + AC current peak value < 300% of range. The RMS current < 10 A rms including the DC component.
Shunt Resistor	100Ω for 200uA , 2mA
	1Ω for 20mA,200mA
	0.01Ω for 2A,10A
Input Protection	Externally accessible 10A,250V Time-Lag fuse
	Internal 12A, 250 V Time-Lag fuse
Settling Time Considerations	
<p>The default measurement delay is selected to give the correct reading for most measurements. Make sure the RC circuit of the input terminal has fully settled (about 1s) before taking higher accuracy measurements.</p> <p>Applying > 300 Vrms (or > 5 Arms) will cause self-heating of signal-conditioning components and these error are included in the instrument specifications. Internal temperature changes due to self-heating may cause additional error on lower ac voltage ranges. The additional error will be lower than 0.02 % of reading and will generally dissipate within a few minutes as the signal-conditioning components return to normal operating temperature.</p>	
Frequency and Period	
Measurement Method	Reciprocal-counting technique, AC-coupled input using the AC voltage function.
Input Impedance	1 MΩ ± 2% in parallel with < 150 pF capacitance on any range
Input Protection	750 V rms on all ranges
Measurement Considerations	All frequency counters are susceptible to error when measuring low-voltage, low-frequency signals. Shielding inputs from external noise is recommended
Settling Time Considerations	Errors will occur when attempting to measure the frequency or period of an input following a dc offset voltage change. Make sure the RC circuit of input terminal has been fully settled (about 1s) before reading the accurate measurement.
Capacitance Measurement	
Measurement Method	Apply constant current into the capacitance, and measure the voltage changing rate.
Connection Type	2-wire
Input Protection	1000 V on all ranges
Measurement considerations	Since small capacitance measurements are susceptible to the external noise, shielding inputs from external noise is critical for minimizing measurement errors.
Temperature Measurement	
Measurement Method	Support for TC and RTD types of sensor
Measurement considerations	The built-in cold junction temperature tracks the temperature inside the banana jack. The change of the temperature in banana jack may cause additional error. When using the built-in cold junction compensation, connect the sensor terminal of the thermocouple to the banana jack and allow it warm up for more than 3 minutes to minimize error.

Triggering and Storage

Trigger	Pre-trigger or Post-trigger, Internal Trigger or External Trigger, Rising Edge Trigger or Falling Edge Trigger
Time Base Resolution	40us, 0.01% Accuracy
Trigger Delay	0 to 1000s
Reading Sensitivity	0.01%, 0.1%, 1% or 10% reading
Single Trigger Samples	1 to 599999999
External Trigger Input	Level: TTL compatible
	Trigger: Selectable rising edge or falling edge
	Input Impedance: $\geq 30K\Omega//500pF$
	Delay: $< 50 \mu s$
	Maximum Rate: 300/s
VMC Output	Minimum Pulse Width: $2 \mu s$
	Level : 5V TTL Compatible
	Output Polarity : Positive and negative optional
	Output Impedance : 200Ω , typical
Pulse Width: about $2\mu s$	

History Records

Volatile Memory	10K reading of history records
Nonvolatile Memory	1Gb Nand Flash, Mass storage configuration files and data files, Supports U-disk external storage

Math Functions

Min/Max/Average, dBm, dB, Pass/Fail, Relative, Standard deviation, Hold, Histogram, Trend chart, Bar chart

General Specifications

Power Supply

AC 100 V ~ 120 V	45 Hz — 66 Hz
AC 200 V ~ 240 V	45 Hz — 66 Hz

Detect the power-line frequency automatically at power-on, 400Hz defaults to 50Hz

Power Consumption	25VA max
-------------------	----------

Mechanism

Dimension	(length×width×height): 345.45mm×260.29mm×107.21mm
Weight	3.377Kg (Net weight)

Other characteristics

Display Screen	4.3 "TFT-LCD with resolution 480*272
Working Environment	Full accuracy for 0 °C to 50 °C
	Full accuracy to 40 °C , 80% R.H., Non-coagulation
	Storage Temperature — 20°C to 70°C
	Shock and Vibration: conforming to MIL-T-28800E, III, 5 level (only for sine)
Height above sea level: up to 3000 meters	
EMC	Conforming to EMC (2004/108/EC) and EN 61326-1:2013
Safety	IEC 61010-1; EN 61010-1; UL 61010-1; CAN/CSA-C22.2 No. 61010-1 Measurement CAT I 1000 V/CAT II 600 V
Remote Interface	10/100Mbit LAN, USB2.0 Full Speed Device, Host
Programming Language	Standard SCPI, compatible with commands of main stream multimeters
Warm Up Time	90 minutes

Ordering Information

Models	T3DAQ1-16 16 Channel Data Acquisition System
Standard Accessories	Power Cord that fits the Destination Country
	Two Test Leads, Two Alligator Clips
	USB Cable
	Quick Start Guide
	Calibration Certificate

ABOUT TELEDYNE TEST TOOLS



Company Profile

Teledyne LeCroy is a leading provider of oscilloscopes, protocol analyzers and related test and measurement solutions that enable companies across a wide range of industries to design and test electronic devices of all types. Since our founding in 1964, we have focused on creating products that improve productivity by helping engineers resolve design issues faster and more effectively. Oscilloscopes are tools used by designers and engineers to measure and analyze complex electronic signals in order to develop high-performance systems and to validate electronic designs in order to improve time to market.

The Teledyne Test Tools brand extends the Teledyne LeCroy product portfolio with a comprehensive range of test equipment solutions. This new range of products delivers a broad range of quality test solutions that enable engineers to rapidly validate product and design and reduce time-to-market. Designers, engineers and educators rely on Teledyne Test Tools solutions to meet their most challenging needs for testing, education and electronics validation.

Location and Facilities

Headquartered in Chestnut Ridge, New York, Teledyne Test Tools and Teledyne LeCroy has sales, service and development subsidiaries in the US and throughout Europe and Asia. Teledyne Test Tools and Teledyne LeCroy products are employed across a wide variety of industries, including semiconductor, computer, consumer electronics, education, military/aerospace, automotive/industrial, and telecommunications.

Distributed by:

teledynelecroy.com

© 2018 Teledyne Test Tools is a brand and trademark of Teledyne LeCroy Inc. All rights reserved. Specifications, prices, availability and delivery subject to change without notice. Product brand or brand names are trademarks or requested trademarks of their respective holders.

T3 stands for Teledyne Test Tools.

www.valuetronics.com

Teledyne LeCroy (US Headquarters)

700 Chestnut Ridge Road
Chestnut Ridge, NY, USA 10977-6499

Phone: 800-553-2769 or 845-425-2000
Fax Sales: 845-578-5985
Phone Support: 1-800-553-2769
Email Sales: contact.corp@teledynelecroy.com
Email Support: support@teledynelecroy.com
Web Site: <http://teledynelecroy.com/>

Teledyne LeCroy (European Headquarters)

Teledyne LeCroy GmbH
Im Breitspiel 11c
D-69126 Heidelberg, Germany

Phone: +49 6221 82700
Fax: +49 6221 834655
Phone Service: +49 6221 8270 85
Phone Support: +49 6221 8270 28
Email Sales: contact.gmbh@teledynelecroy.com
Email Service: service.gmbh@teledynelecroy.com
Email Support: tlc.t3.appsupport.eu@teledyne.com
Web Site: <http://teledynelecroy.com/germany>



12Oct2021